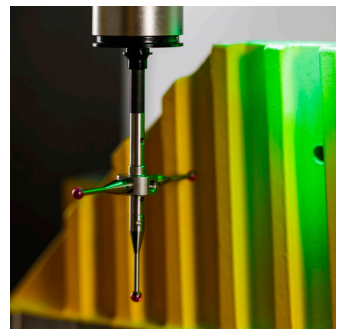
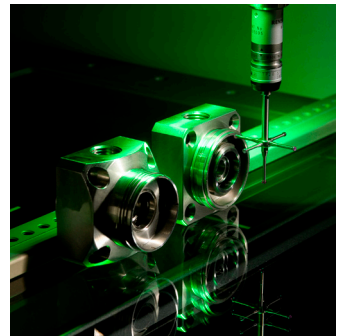
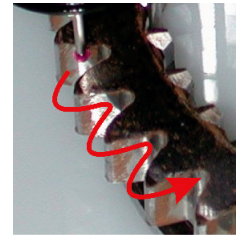
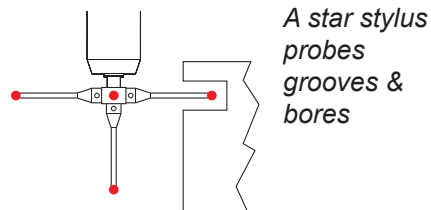
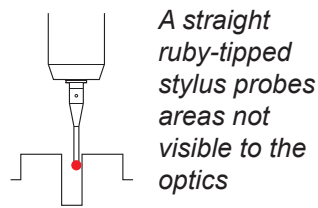
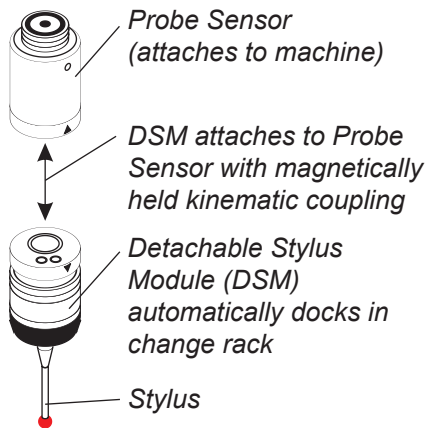


Touch Probes

- **Add true multisensor capability to your SmartScope measurement system –**
Touch probes are available for all OGP® SmartScope systems
- **Automatic deployment –**
OGP touch probes deploy automatically when called upon, and are stored in an optional change rack at other times
- **Measure points or surfaces –**
Available touch trigger probes measure discrete points, while scanning probes (available on select models) measure surface contours
- **Software integration –**
Touch probe points are used with measured points from other sensors for seamless measurement
- **Integrated sensor calibration –**
An available reference sphere and calibration software keep touch probes calibrated

Additional SmartScope® Sensor Capability for Comprehensive Part Measurements





A Scanning Probe acquires data points between user defined start & end points, even when the system has no prior knowledge of the path between those points.

Technical Specifications

Probe type	Touch Trigger Probe	Scanning Probe
Available for	OGP® SmartScope® Vantage, ZIP, Flash/CNC, ATS, and Apex Micro systems	OGP SmartScope Vantage 300, 450, 650, 800; SmartScope Flash/CNC 200, 300; SmartScope CNC 500, 670; SmartScope ZIP® 250, 300, 450, 800; SmartScope ZIP Advance 250, 300, 450
Compatible metrology software	QVI® ZONE3®, MeasureMind® 3D Multi-Sensor or Measure-X®	QVI ZONE3 or MeasureMind 3D MultiSensor
Supported touch probes	Renishaw® TP20, TP200	SP25 Scanning Probe kits, TP20 (requires TM25-20 TTP module adaptor), TP200 (requires PAA1 adaptor)
Programmable PH10 articulating probe kits (available on SmartScope Vantage 450, 650, or 800 only)	PH10T with TP20 or TP200 (requires ZONE3 software)	PH10M with SP25 Scanning Probe (requires ZONE3 or MeasureMind 3D software)
Mounting	Probe sensor mounts on touch-probe-ready OGP measurement systems; detachable stylus module and stylus attach to probe sensor via magnetic self-aligning kinematic joint	
Change rack(s)	2-, 4-, or 6-position	
XYZ frame of reference	Freely interchange touch probe measurements and those taken by other sensors within the same measurement routine	
Calibration option	Calibration kit includes certified reference sphere, kinematic mounting base, and calibration certificate	
Other options	For complete functionality, the QVI Probe Controller (for TP20) or PI200 interface box (for TP200), a probe sensor, and at least one detachable stylus module (DSM) and stylus is required; for automated stylus changing, a multi-station change rack is required, as well as additional DSMs (one for each station), and additional styli.	



World Headquarters: Rochester, NY, USA • 585.544.0400 • www.ogpnet.com
 OGP Shanghai Co, Ltd: Shanghai, China • 86.21.5045.8383/8989 • www.smartscope.com.cn
 OGP Messtechnik GmbH: Hofheim-Wallau, Germany • 49.6122.9968.0 • www.ogpmesstechnik.de
 Optical Gaging (S) Pte Ltd: Singapore • 65.6741.8880 • www.smartscope.com.sg

